

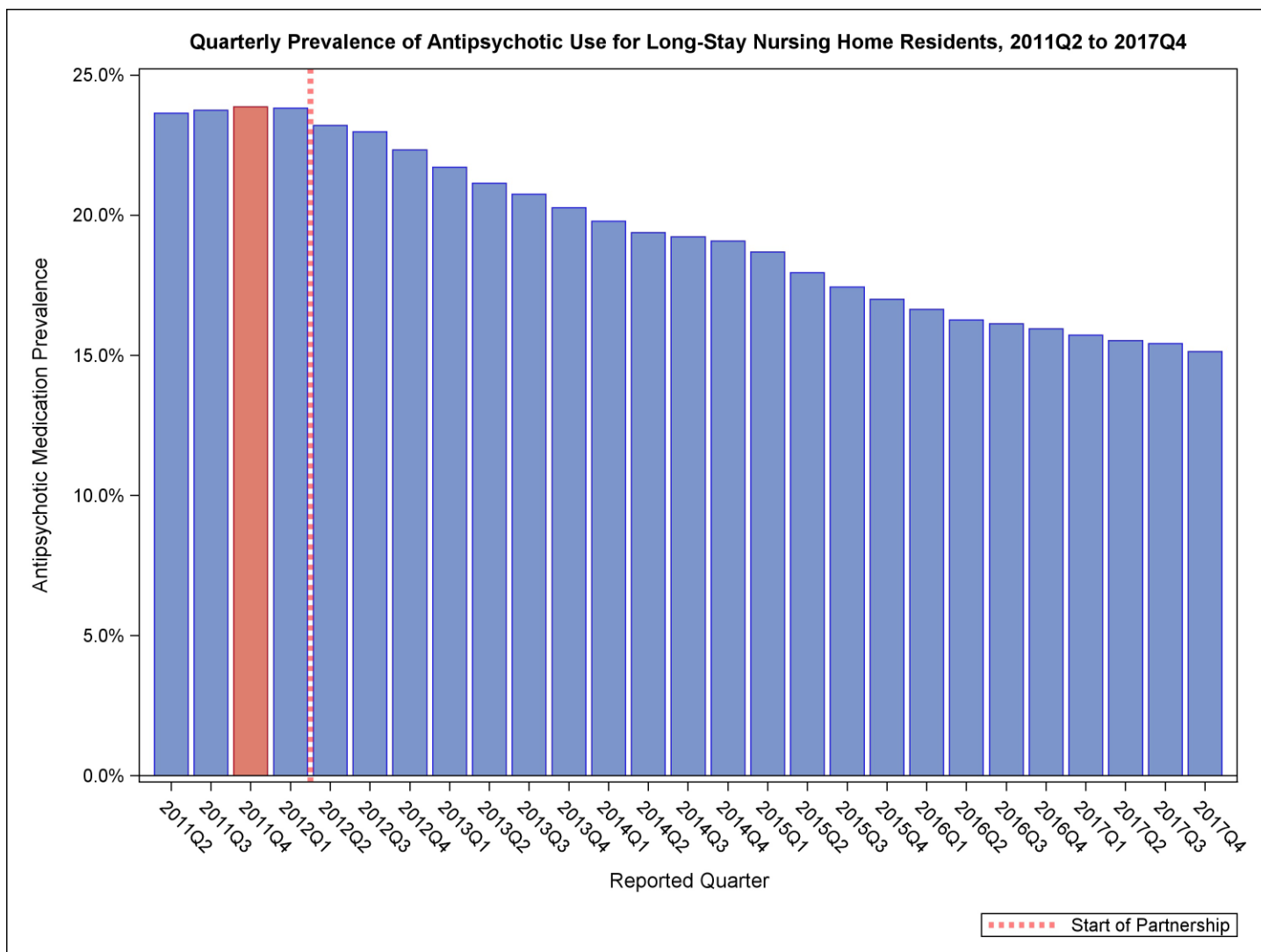
National Partnership to Improve Dementia Care in Nursing Homes: Antipsychotic Medication Use Data Report (April 2018)

The National Partnership to Improve Dementia Care in Nursing Homes is committed to improving the quality of care for individuals with dementia living in nursing homes. The National Partnership has a mission to deliver health care that is person-centered, comprehensive and interdisciplinary with a specific focus on protecting residents from being prescribed antipsychotic medications unless there is a valid, clinical indication and a systematic process to evaluate each individual’s need. The Centers for Medicare & Medicaid Services (CMS) promotes a multidimensional approach that includes; research, partnerships and state-based coalitions, revised surveyor guidance, training for providers and surveyors and public reporting.

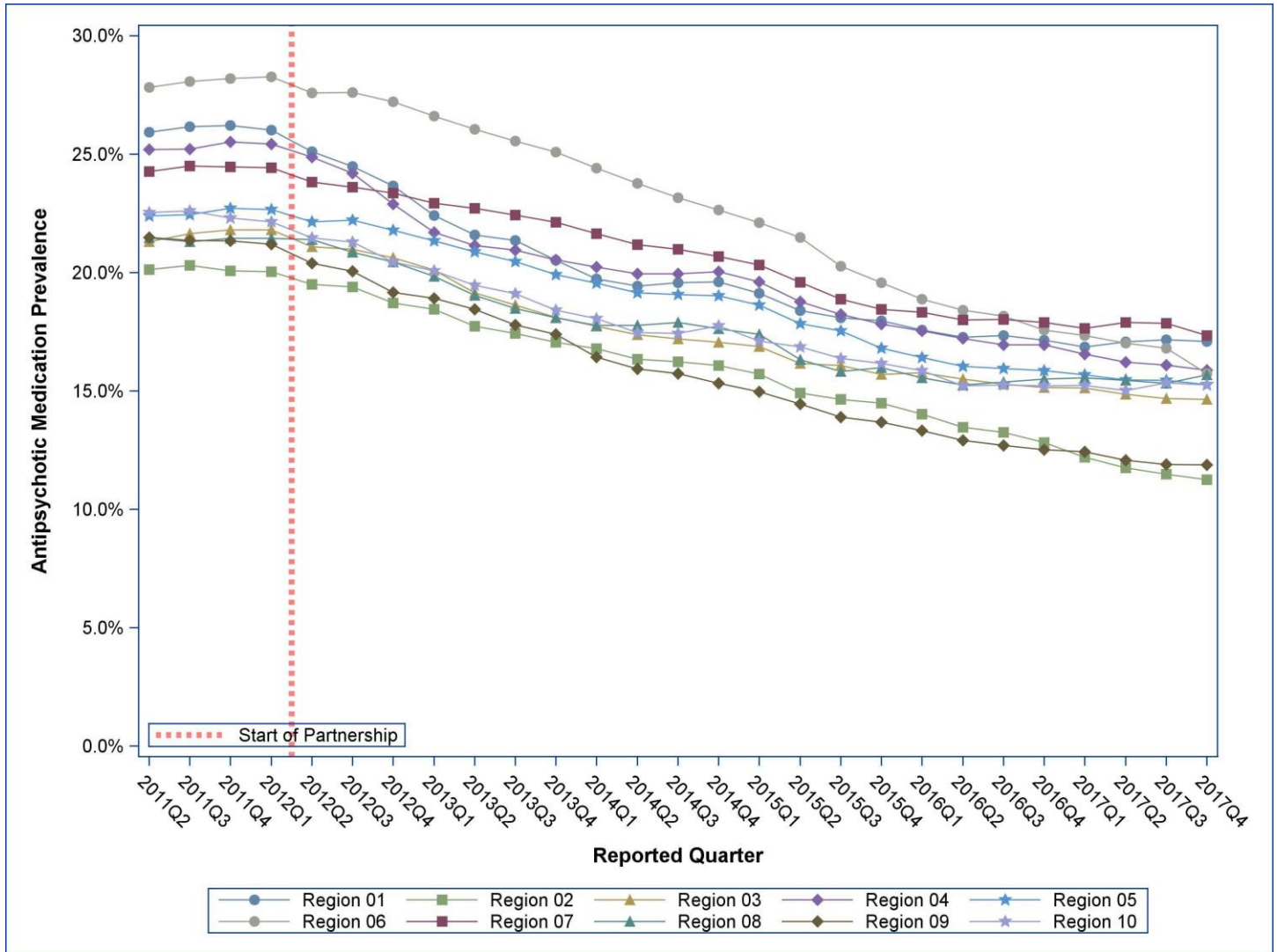
CMS is tracking the progress of the National Partnership by reviewing publicly reported measures. The official measure of the Partnership is the percentage of long-stay nursing home residents who are receiving an antipsychotic medication, excluding those residents diagnosed with schizophrenia, Huntington’s Disease or Tourette’s Syndrome. In 2011Q4, 23.9 percent of long-stay nursing home residents were receiving an antipsychotic medication; since then there has been a decrease of 36.6 percent to a national prevalence of 15.1 percent in 2017Q4. Success has varied by state and CMS region, with some states and regions having seen a reduction of greater than 40 percent.

A four-quarter average of this measure is posted to the Nursing Home Compare website at <https://www.medicare.gov/nursinghomecompare/>.

For more information on the National Partnership, please send correspondence to dnh_behavioralhealth@cms.hhs.gov.



Quarterly Prevalence of Antipsychotic Use for Long-Stay Residents, CMS Regions



Region	2011Q4	2012Q1	2012Q4	2013Q1	2013Q4	2014Q1	2014Q2	2014Q3	2014Q4	2015Q1	2015Q2	2015Q3	2015Q4	2016Q1	2016Q2	2016Q3	2016Q4	2017Q1	2017Q2	2017Q3	2017Q4	Percentage point difference (2011Q4-2017Q4)	% Change
National	23.9%	23.8%	22.3%	21.7%	20.3%	19.79	19.4%	19.2%	19.1%	18.7%	18.0%	17.4%	17.0%	16.6%	16.3%	16.1%	16.0%	15.7%	15.5%	15.4%	15.1%	-8.73	-36.6%
Region 01	26.2%	26.0%	23.7%	22.4%	20.5%	19.74	19.4%	19.6%	19.6%	19.1%	18.4%	18.1%	18.0%	17.6%	17.3%	17.3%	17.1%	16.9%	17.1%	17.2%	17.1%	-9.14	-34.8%
Region 02	20.1%	20.0%	18.7%	18.4%	17.1%	16.78	16.3%	16.2%	16.1%	15.7%	14.9%	14.6%	14.5%	14.0%	13.5%	13.3%	12.8%	12.2%	11.8%	11.5%	11.2%	-8.83	-44.0%
Region 03	21.8%	21.8%	20.6%	20.1%	18.1%	17.73	17.4%	17.2%	17.1%	16.9%	16.2%	16.1%	15.7%	15.8%	15.5%	15.3%	15.1%	15.1%	14.9%	14.7%	14.6%	-7.17	-32.9%
Region 04	25.5%	25.4%	22.9%	21.7%	20.5%	20.24	20.0%	19.9%	20.0%	19.6%	18.8%	18.2%	17.8%	17.5%	17.2%	16.9%	16.9%	16.6%	16.2%	16.1%	15.9%	-9.64	-37.8%
Region 05	22.7%	22.7%	21.8%	21.3%	19.9%	19.55	19.1%	19.1%	19.0%	18.6%	17.8%	17.5%	16.8%	16.4%	16.0%	16.0%	15.9%	15.7%	15.5%	15.4%	15.3%	-7.44	-32.8%
Region 06	28.2%	28.3%	27.2%	26.6%	25.1%	24.40	23.8%	23.2%	22.6%	22.1%	21.5%	20.3%	19.6%	18.9%	18.4%	18.2%	17.6%	17.3%	17.0%	16.8%	15.7%	-12.45	-44.2%
Region 07	24.5%	24.4%	23.4%	22.9%	22.1%	21.65	21.2%	21.0%	20.7%	20.3%	19.6%	18.9%	18.4%	18.3%	18.0%	18.0%	17.9%	17.7%	17.9%	17.9%	17.3%	-7.12	-29.1%
Region 08	21.4%	21.5%	20.4%	19.8%	18.1%	17.77	17.8%	17.9%	17.6%	17.4%	16.3%	15.8%	16.0%	15.6%	15.2%	15.4%	15.5%	15.6%	15.4%	15.3%	15.7%	-5.77	-26.9%
Region 09	21.3%	21.2%	19.2%	18.9%	17.4%	16.44	15.9%	15.7%	15.3%	15.0%	14.5%	13.9%	13.7%	13.3%	12.9%	12.7%	12.5%	12.4%	12.1%	11.9%	11.9%	-9.46	-44.3%
Region 10	22.3%	22.1%	20.4%	20.1%	18.4%	18.05	17.5%	17.4%	17.8%	17.1%	16.9%	16.4%	16.2%	15.9%	15.2%	15.3%	15.2%	15.2%	15.0%	15.3%	15.3%	-7.04	-31.6%

